

**BEGINNING OF YEAR MASS  
- SECONDARY**  
Refer to page 4

## MOUNT CARMEL COLLEGE

R-12

*Belonging ~ Diversity ~ Excellence ~ Relationship*



### From the Principal

Dear Families

Welcome to all of our students and their families.

A special welcome to all of the students and families who have joined our College community for the first time.

#### Staff News

At the start of this school year we welcomed the following new staff:

**Secondary Teachers:** Alexander Corletto, Sophie Economos, Lepeng (Annabeth) Ju, Emma Gates, Susanne Oliver-Dearman, Monica Leonard, Kristina Perkas, Shagun Sharma, Oscar Taras, Luke Wittenberg

**Primary Teachers:** Zac Cross, Eloise Di Sisto, Jane Stephens, Ashleigh Taplin

**Western Technical College ESO:** Kelly Martin

**Returning Teachers:** Eva Grasso, Katya Hatzis, Rosy Hevko,

**ESOs:** Cleo Durward, Dan Ferris, Sara Landolfi, Alex Norton-Hayes, Tracy Shannon, Hudson Angove (SportsReady trainee)

We welcome Fr Jacek (Fr Jack) Wojcik to our Mount Carmel College community.

#### Excellent Year 12 Results

We congratulate the Year 12 Class of 2023 on their excellent South Australian Certificate of Education (SACE) results.

We again had **100% South Australian Certificate of Education (SACE) completion rate**, as has been the case for many years at Mount Carmel College. **99% of all grades awarded were C- or higher and there were no E grades at all.**

Special congratulations to our Dux of 2023, **James Pham**, who achieved an adjusted ATAR of 96.80.

**Over 92% of our students** who applied for university received an offer in the first round and of these, **72% were offered their first preference.**

We are very proud of the outstanding results achieved by our Year 12 students. We know that excellent academic achievements are the result of a lot of hard work and the wonderful partnership in learning between the student, parents, teachers, support staff and the College. Our Year 12 students enthusiastically participated in the

many different opportunities open to them through Mount Carmel College.

#### Parent Evening

Many thanks to all members of our parent community who engaged in the Reception to Year 6 and Year 7 Meet the Teacher Evenings recently. The partnership between the school and parents is so important.

#### Building Works in the Holidays

In the December-January holidays we undertook some important building works including:

*Continued on page 2.*

### In this issue...



From the Principal.....	1
Diary Dates.....	2
Student Absences/Late Arrivals.....	2
MCC Correct School Shoes .....	2
NAPLAN 2024 .....	3
Canteen Orders Via QKR.....	3
Beginning of Year Mass - Secondary ...	4
Cyber Safety .....	5
First Day in Reception .....	6
Reception Tower Game.....	7
Student Supervision.....	7
Mathematics Update - IXL .....	8
2024 Finance Information .....	10
Parent Calendar - Key Dates Term 1 ....	12
Data Collection Notice .....	13
Open Day: Secondary Campus .....	14
Community Noticeboard .....	15

# Diary Dates

## FEBRUARY 2023

- 14-16 Year 6 Camp
- 15 Year 7-12 DUX Assembly
- 16 Year 7 Reflection Day
- 19 Year 5-12 Sports Day  
(SA Athletics Stadium, Mile End)
- 28 Year 10 Reflection Day (Group 1)
- 29 Year 10 Reflection Day (Group 2)

## MARCH 2023

- 1 Year 7-12 Swimming Carnival

Further dates are available from our website at [www.mcc.catholic.edu.au](http://www.mcc.catholic.edu.au)

### 2024 TERM DATES:

- Term 1: 29 Jan - 12 Apr
- Term 2: 30 Apr - 5 Jul
- Term 3: 22 Jul - 27 Sep
- Term 4: 14 Oct - 10 Dec



Like us on Facebook!

Stay up to date with all the latest Mount Carmel College news and events!

Visit us at [www.facebook.com/mccadelaide](https://www.facebook.com/mccadelaide) and click 'Like'.

## Student Absences/ Late Arrivals

When a student is absent or going to be late, parents should notify the school by 9am on that day by texting the **Absentee Line on 0438 368 846 (SMS) or phoning (08) 8447 0500**. You will need to state the following:

**NAME OF CHILD, YEAR LEVEL, REASON FOR ABSENCE** eg *If late approximately what time will your child arrive etc.*

A medical certificate is required if a student is away for more than 3 days. For any planned extended absence, a letter to the Principal is required to explain circumstances.

## From the Principal Continued...



- Separation of open space classrooms on the Primary Campus into individual classrooms. Some of these rooms also received a complete makeover, with new carpet and painting of the walls. They look fantastic and importantly, we know that they will make it easier for students to learn.
- Other minor works on the Primary Campus include improving the entrance to the office from the yard, improvements and line marking in the carpark and the creation of offices and a meeting room.
- New transportables have been installed on both campuses as we await the commencement of building works on the Primary Campus and as we seek council approval for a new building on the Secondary Campus.
- The staffrooms at both the Primary Campus and Secondary Campus received makeovers.
- On the Secondary Campus, new artificial turf has been laid adjacent to the Evans Building to create some wonderful basketball, netball and hand tennis courts.
- Work is progressing on the re-build of the Carmelite Courts and we are hoping to take possession of this exciting new area in Term 3, 2024.

to Mr David Cotton, Business Manager, for his commitment and assistance with these projects.

### Year 9 & 6 Camps

In week 1 of the school year our Year 9 students ventured to Victor Harbor for a 3 day camp. There were many tired but happy students upon their return Friday afternoon.

Similarly our Year 6 students are currently enjoying time away on camp to bond as a year level and to develop their confidence and friendships. Many thanks to the staff who give up the comforts of home to enable these camps to happen.

### Make a Good Start

We want all of our students to begin the year well in every context. It is important that the College uniform is worn well at all times; it means getting down to the core business of learning and working with every teacher to produce the best personal work possible; it involves challenging oneself to participate in the array of curriculum extension activities available; it means embracing the social justice programs at the College and contributing to these. The evidence clearly supports that the students who get the most out of schools such as Mount Carmel College are those who enthusiastically embrace the educational, cultural, sporting and social justice offerings available.

Be a person of hope to others.

*John Konopka, Principal*

A lot of work has been undertaken recently and I express my appreciation



## MOUNT CARMEL COLLEGE

R-12

### What is a School Shoe and what is a Sports Shoe?

#### School Shoe

Black, leather lace-up school shoes or black leather T-bar shoes



#### Sports Shoe

Lace-up sports sneakers, cross-trainers or basketball boots



X Not permitted

← These are slip-ons, not lace-up →

Boots

Visit [www.mcc.catholic.edu.au](http://www.mcc.catholic.edu.au) or phone 8447 0500



## NAPLAN 2024

On Tuesday 27th February, our Year 3, 5, 7 and 9 students will be participating in the national School Practice Test in preparation for undertaking NAPLAN tests online in March. **The School Practice Test will not involve any marking, scoring or reporting of students' performance.**

Participating in the practice test is important as it will help us to confirm our technical readiness for the NAPLAN Online tests in March. We will also have the opportunity to practice managing the classroom procedures for online assessment, as well as the test administration processes. National feedback following the practice tests assists in

identifying improvements that can be implemented before the NAPLAN Online assessments in March.

**The March NAPLAN test window starts on Wednesday 13 March 2024 and finishes on Monday 25 March 2024.** An information brochure for parents has been attached which provides an overview of the tests.

Parents can refer to the following link for more information about NAPLAN 2024.

<https://www.mcc.catholic.edu.au/learning/naplan>

## Stage 1 and 2

The year has started well for all of our Year 10, 11 and 12 students who are studying subjects at Stage 1 and 2. I have spoken to all students about the importance of maintaining good work habits involving their use of class time and attentiveness to due dates. It is important that students studying these subjects attend every lesson. Missed days can be very difficult to catch up and research shows that there is a direct link between those students with the highest attendance at school and the students who achieve the highest SACE results. Parents can track due dates for each subject via SEQTA.

**Jon Cenko**  
Deputy Principal – Secondary

# Canteen Orders Via QKR

Make sure you have updated your profile including updating to your child's current roll class from list provided.

If unable to access QKR on your phone, try accessing on another device such as a laptop or PC. Instructions are on our website.

**When placing a Canteen order by QKR please ensure that you choose the relevant Canteen campus menu your child is located at.**

**Qkr | masterpass** For quicker, hassle-free school payments, try Qkr! today

Introducing Qkr (pronounced 'quicker') by Mastercard, the secure and easy way to order and pay for school items from your phone at a time and place that suits you.

With Qkr you can:

- Pay for a variety of school items;
- See your receipts on the app and get them sent by email if required.

Getting started is easy - try it yourself today

**Step 1 Download Qkr!**  
on your Android phone or iPhone. iPad users can download iPhone app

**Step 2 Register**  
Select your Country of Residence as 'Australia' and follow the steps to register

**Step 3 Find our school**  
Our school will appear in 'Nearby Locations' if you're within 10kms of the school, or search for our school by name.

**Step 4 Register your children**  
When first accessing our school you will be prompted to add a student profile for your child. This allows you to make orders and payments for them.

**Add your children's details in Student Profiles**

- Select 'Add student profile'
- Add each child's details
- Manage each child's details in Student Profiles

**Purchase school items**

- Select a menu from our school
- Select child you are ordering for
- Select your items
- Tap 'Checkout' then confirm and pay

**Making payments**

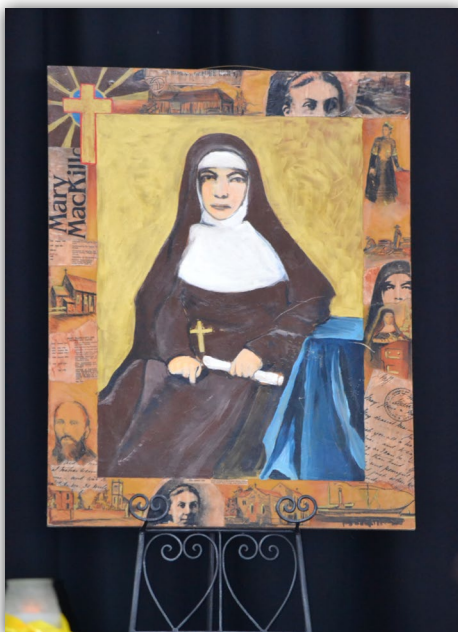
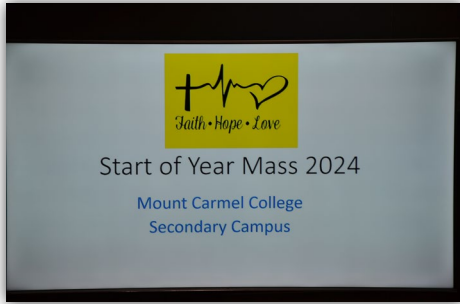
- Add up to 5 cards to your wallet
- At checkout select which card to pay with.
- Pay with any cards accepted by the school.
- Once your payment is approved you can continue to the home page, or view your receipt.

Steps to follow are:

- Log into QKR
- Choose location – Mount Carmel College R-12
- Then choose depending on where your child is located either the PRIMARY Lunch menu or the SECONDARY Lunch menu
- Proceed with choosing from the menu your child's order.



# Opening Mass 2024





# Opening Mass 2024 Continued...



## Cyber Safety

The following websites contain useful information for parents on cyber safety:

<https://www.esafety.gov.au/education-resources/iparent>  
(parent information re technology)

<https://bullyingnoway.gov.au/>  
(online safety)

<https://www.ncab.org.au/bullying-advice/bullying-for-schools/>  
(information re bullying)

<https://esafety.gov.au/>  
(Office of the eSafety Commissioner)

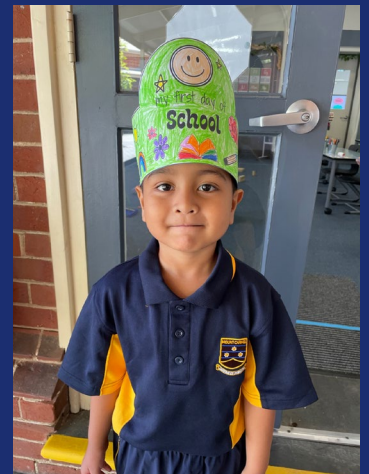


# First Day in Reception

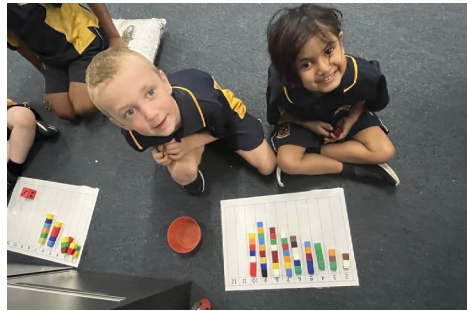


Together we celebrate the remarkable start of our new Reception students, embracing their curiosity for learning and settling positively into our learning environment. We are SO proud of all our Reception students and cannot wait to see their growth and discovery this year!

*Michaela Gauci*  
Reception G







## Student Supervision

As a school we have what the law defines as a duty of care towards the students enrolled. While the courts recognise that accidents cannot be totally prevented, schools are charged with the responsibility of ensuring the type of supervision which a normal parent would provide, considering the age of the student and the activity in which she is engaged. I would like to remind parents and students about several points which arise from the school's duty of care:

1. Students will be supervised within the school grounds each school day from 8:05am on the secondary campus and 8:30 am on the primary campus.
2. Students are supervised at recess and lunch times.
3. When dismissed in the afternoon, students are expected to leave the school grounds immediately and proceed directly home. Students staying for activities organised by the school, such as sport or drama practice, will be supervised.
4. If a student is late or absent it is the responsibility of Parents/ Caregivers to notify the College before 9:00 am. To do this, a text message can be sent to 0438 368 846 and include student name, Pastoral Care Group/Primary Teacher, reason for lateness/absence and the date. This number is only available for text messaging. If the College has not been notified of an absence or late arrival by 9:00 am, an SMS text message will be sent to Parents/Caregivers that morning, advising them that the student is not at school. It is the responsibility of a Parent/Guardian to provide current and updated mobile numbers to the College to ensure this process is maintained.

These measures ensure that both parents and staff are able to exercise their legal responsibilities for the students in a way that ensures a responsible degree of safety.



The mathematics team uses a variety of resources and ways for students to access learning on the Secondary Campus. We would like to introduce or remind parents of the IXL program that all students in Years 7, 8, 9 and 10 have access to. This program is used as a learning tool in lesson time, additionally students may be asked to complete homework tasks to review and reflect on the

learning in the classroom. Students can access this program at home and are encouraged to utilise this to support the learning of mathematical topics and numeracy concepts.

All students have been given a unique login; username and password. As such, teachers can view each students learning, their areas for improvement and their

successes. During the lead-up to NAPLAN teachers in Year 7 and 9 will be using IXL as a method of revision of all concepts learnt in previous schooling years.

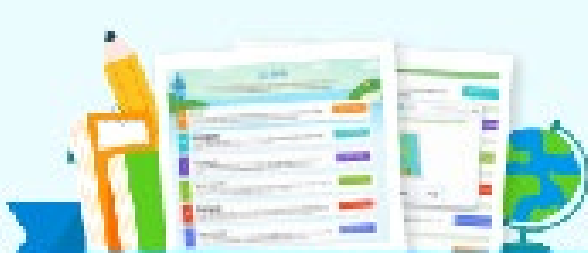
If you have any questions, please don't hesitate to contact your child's Mathematics Teacher.

**Deb West**  
**Mathematics Coordinator**

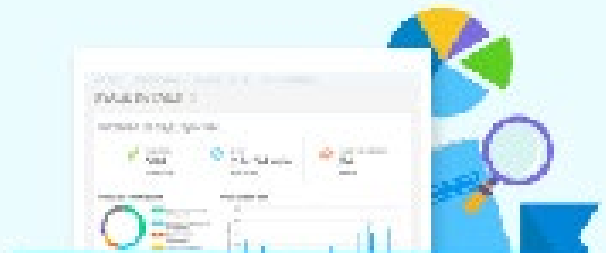
## Learn with IXL at home!



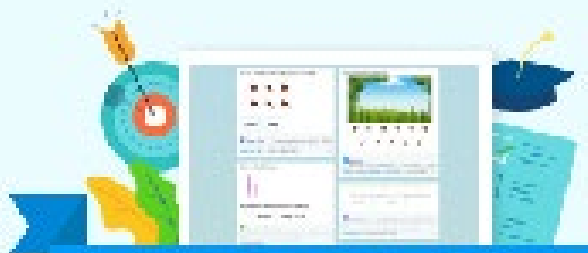
We're using IXL to support our curriculum this year, and your child has access to this online programme at home. With thousands of skills that match what we're learning, as well as insights into student progress, IXL is a great resource to help your child excel.



Unlimited practice in 5,500+ skills



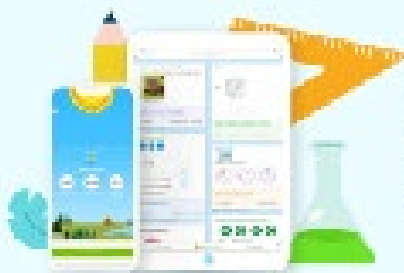
Progress tracking reports



Personalised skill recommendations



Certificates and awards



### IXL MOBILE APPS

Available for iPad and iPhone, Android tablets and phones, and Kindle Fire!



## TOP WAYS TO USE IXL AT HOME

- 1 Explore personalised skill suggestions**  
Encourage your child to visit their Recommendations wall for helpful review or new challenges—it's full of skills picked just for them!
- 2 Stay in the loop**  
Sign in to your child's account and click on Analytics to see what they've been working on and take a peek at their progress.
- 3 Celebrate your child's accomplishments**  
Want to receive certificates whenever your child reaches a milestone? Sign in, click on their profile icon, and enter your e-mail address under "Profile & settings".



### SMARTSCORE CORNER

#### What is IXL's SmartScore?

The SmartScore is the best possible measure of how well your child understands a skill!  
It factors in question difficulty, answer accuracy and consistency.

**You can adjust  
SmartScore goals  
as you go**

Aim for 80 or 90, which shows a strong understanding of a skill. For an extra challenge, try for mastery (a score of 100).

**The SmartScore is  
not a percentage  
score**

Unlike percentage-based scoring, the SmartScore is truly smart. Even if a student gets a question wrong, it's always possible to reach a 100.

**Taking breaks is  
always okay**

If your child needs to pause their practice, they can always return to a skill later—all progress will be automatically saved!



## **SCHOOL FEE STATEMENTS**

Thank you to all those families who have contacted us to arrange payment plans, School Card Applications and Catholic Primary Sibling Discount forms, it is appreciated.

Statements will be issued within 2 weeks, and I thank you for your patience and understanding whilst we work towards finalizing them. When you receive your statement, please check that all information is correct and please refer to our 2024 Fee Schedule on our website for further detailed information which may have relevance to your family. Any anomalies noticed on your statement, please contact us as soon as possible so it can be addressed.

## **PAYMENT PLANS**

It is your responsibility to arrange a payment plan to ensure your school fees account is paid by 30 November each year as per our Fees Policy. This involves reviewing your payment plan regularly. We are available to assist you with this process at any time. If you have any concerns about meeting your fee commitment, please contact us as soon as possible (do not leave it to the end of the year when fees are due) as it is important to us that we apply an appropriate plan and support to individuals who are experiencing any challenges. Please be assured that all discussions remain confidential.

New Payment plans need to be completed and lodged with us annually unless it has no end date. **They are not automatically renewed.**

If you have a payment plan with no end date, you still need to review your plan annually and complete & lodge an amendment payment plan if required.

## **SCHOOL CARD**

To receive Tier 2 Fees at the beginning of each year you will need to complete a School Card Application relevant to your circumstances. They are available for online lodgement (our preference) or lodge with the College a hard-copy as soon as possible. Anyone who was eligible last year and new families commencing this year who provided us with a copy of their Centrelink card with their Acceptance of Offer payment will automatically have Tier 2 fees applied.

If you are advised that you are not eligible for School Card and do not agree with their Assessment of your application, please complete a Reassessment Form providing supporting documentation and lodge either to with the College or School Card Department within the timeframe requested.

School Card discounts will be reversed (if applied) on your account upon notification you are not eligible based on the following:

- Reassessment Form not lodged within the timeframe requested.
- No further action taken by you regarding not eligible status.
- You confirmed with the College that you are not eligible.

Please contact us if you have any questions or concerns to do with School Card, application process including Reassessment as we can guide you to what options are available to you based on your current circumstances.

## **WEBSITE LINK FOR DETAILED FINANCE INFORMATION INCLUDING ACCESSING FORMS/SCHOOL CARD APPLICATIONS (Online & hardcopy) is:**

<https://www.mcc.catholic.edu.au/enrolment/fees-and-stationery>

## **BPAY – SCHOOL FEES**

**BPAY Biller Code is 297846**

**Reference Number** is your unique number that identifies your payment which is automatically offset against your account. The first four digits of your reference number for school fees payments should be 8267. Your BPAY details are on your statement.

## **EFT**

Our bank details are provided on your statement, please ensure that you quote as a reference to appear on our statement your BPAY reference number (starting with number 8267) or your Family/Billing Id number so that your payment can be easily identified and offset against your account.

## **QKR**

This payment method is an App that is installed onto your phone. You can also access QKR on your laptop, tablet, or PC (instructions are available on our website). We are continually extending what is paid by QKR as it provides flexibility of lodging payments outside business hours.



# 2024 Finance Information Continued...

The following two locations are available depending on what payment you are processing:

## **MOUNT CARMEL COLLEGE R-12**

School fees **are not** a payment option by QKR.

Some payments you can make via QKR are:

- Canteen – Primary Lunch Menu & Secondary Lunch Menu
- OSHC
- College Events – Graduation, Formal, Italy Study Tour, Pedal Prix, MMK Day
- Sports
- Instrument Hire
- VET courses

**Canteen orders by QKR** – Please make sure you choose the correct Canteen Menu for the campus your child is located at. On occasions, we have had Primary Campus student order from the Secondary Lunch Menu and vice versa.

Annually please make sure you update your profile and choose your child's current Pastoral Care Group or Roll Class. This assists the Canteen staff to prepare your child's order ready for collection/distribution. For other QKR payments, it assists in identifying and allocating your payment to the correct student.

## **WESTERN TECHNICAL COLLEGE**

WTC students can make the following payments via QKR:

- Beanies
- Caps
- Safety Glasses
- To order from our Canteen

**Choose location Mount Carmel College R-12, CANTEEN Secondary Lunch Menu**

## **BUILDING FUND DONATIONS**

Donations to the Mount Carmel College Building Fund are voluntary and tax deductible. This fund assists the College in the significant capital works that are undertaken. The Building Fund is not applied to your school fees, but we appreciate any contribution towards our capital development and if you wish to donate then please contact me.

## **OSHC & VACATION CARE**

The following payment options are available:

### **QKR**

### **BPAY**

Please use SPIKE program generated BPAY reference number and not your school fees BPAY reference number. First four digits of your reference number for OSHC payments should begin with 9069.

### **EFT**

Please ensure you clearly state the reference to appear on our bank statement is OSHC & your Family and/or Student Name. If OSHC is not stated & we are unable to clearly identify your payment it will be applied to your school fees account.

### **EFTPOS/CREDIT CARD**

Payments can be made direct at the Primary Campus at either the OSHC Director's office or Reception.

### **REGULAR DIRECT DEBIT/CREDIT CARD PAYMENT PLAN**

Please contact either the OSHC Director or me if you wish to use this as a payment method.

For further information regarding OSHC & Vacation Care please access the following link to our website:

<https://www.mcc.catholic.edu.au/primary-campus/out-of-school-hours-care-oshc>

Please do not hesitate to contact us if you have any questions or concerns regarding any of the information pertained in this letter.

Virginia Reimann  
ACCOUNTANT  
[virginia.reimann@mcc.catholic.edu.au](mailto:virginia.reimann@mcc.catholic.edu.au)  
8447 0502

David Cotton  
BUSINESS MANAGER  
[david.cotton@mcc.catholic.edu.au](mailto:david.cotton@mcc.catholic.edu.au)  
8447 0525 or 0417 853 519



## Parent Calendar - Key Dates for Term 1, 2024

	<b>TERM 1, WEEK 3</b>
Wed 14/02/24– Fri 16/02/24	Year 6 Camp (Woodhouse)
Thu 15/02/24	Year 7-12 DUX Assembly
Fri 16/02/24	Year 7 Reflection Day
	<b>TERM 1, WEEK 4</b>
Mon 19/02/24	<b>All Year 5-12 Sports Day</b> (SA Athletics Stadium, Mile End)
Tue 20/02/24	Finance Meeting
	<b>TERM 1, WEEK 5</b>
Tue 27/02/24	Board Meeting
Wed 28/02/24	Year 10 Reflection Day (group 1)
Thu 29/02/24	Year 10 Reflection Day (group 2)
Fri 01/03/24	Year 7-12 Swimming Carnival (some students)
Fri 01/03/24	9:00 am Primary Assembly
Fri 01/03/24	7:00 pm Senior Formal (Krystal Function Centre)
	<b>TERM 1, WEEK 6</b>
Fri 08/03/24	9:00 am R-6 VIP morning
	<b>TERM 1, WEEK 7</b>
<b>Mon 11/03/24</b>	<b>Adelaide Cup Public Holiday</b>
Wed 13/03/24	NAPLAN 2023 13/3-25/3/2024
	<b>TERM 1, WEEK 8</b>
Tue 19/03/24	St Joseph's Day
Tue 19/03/24	Athletics Interschool Carnival (select students)
Tue 19/03/24	Finance Meeting
Thu 21/03/24	Primary Sports Day
Thu 21/03/24	<b>Year 7-12: 1pm dismissal</b> (Open Day)
Thu 21/03/24	4:00 pm - 7:00 pm <b>Open Day</b> (Secondary)
Fri 22/03/24	9:00 am Primary Assembly
	<b>TERM 1, WEEK 9</b>
Mon 25/03 – Wed 27/03/24	Primary – Dental Van
Tue 26/03/24	Board Meeting AGM
Thu 28/03/24	Holy Thursday. <b>1 pm dismissal R-12</b>
Fri 29/03/24	<b>Good Friday</b>
	<b>TERM 1, WEEK 10</b>
Mon 01/04/24	<b>Easter Monday</b>
Tue 02/04 – Fri 05/04/24	Primary - Dental Van
	<b>TERM 1, WEEK 11</b>
Tue 09/04-Fri 12/04/24	R-4 Swimming
Wed 10/04/24	4:00 pm College Tour Secondary Campus
Fri 12/04/24	<b>3:00 pm R-12 End of Term 1</b>
	<b>TERM 1 HOLIDAYS</b>
Thu 25/04/24	ANZAC DAY
	<b>TERM 2, WEEK 1</b>
Mon 29/04/24	R-12 Student-free day
Tue 30/04/24	<b>R-12 Term 2 begins</b>

**R-6 Primary Campus**  
17 Pennington Terrace, Pennington  
Phone: 8447 0500

**7-12 Secondary Campus**  
33 Newcastle Street, Rosewater  
Phone: 8447 0500



44 Russell Street, Rosewater  
Phone: 8447 0560  
Email: [info@wtc.sa.edu.au](mailto:info@wtc.sa.edu.au)  
Website: [www.wtc.sa.edu.au](http://www.wtc.sa.edu.au)

Website: [www.mcc.catholic.edu.au](http://www.mcc.catholic.edu.au) | Email: [mcc@mcc.catholic.edu.au](mailto:mcc@mcc.catholic.edu.au)





## Collection Notice for parents/guardians

### 2024 Student Residential Address and Other Information

The Australian Government Department of Education (the department) would like to notify you that we have requested for your child's school to provide residential address and other information.

Under the Australian Education Regulations 2023, the school is required to provide the department with the following information about each student at the school:

- names and residential addresses of the student's parent(s) and/or guardian(s)
- student residential address (**excluding student names**)
- whether the student is a primary or secondary student (education level)
- whether the student is boarding or a day student (boarding status).

The school collects the above information by generating a **unique and unidentifiable** student reference number (SRN) for each student record. The school only uses the SRN for this collection. **The SRN cannot be used for any other purpose.** The number only indicates to the department that each record provided is for one student.

#### Purpose of the collection

The Student Residential Address and Other Information Collection (the collection) informs Australian Government school education policy and helps ensure funding for non-government schools is based on need.

The information collected is used to inform school funding calculations. It is combined with Australian Bureau of Statistics (ABS) data to calculate a non-government school community's anticipated capacity to contribute to schooling costs.

In 2020, the department introduced a new measure of capacity to contribute: the Direct Measure of Income (DMI). The DMI is based on the median income of non-government school students' parents or guardians using the collection data. For more information see [Direct Measure of Income \(DMI\) Methodology](#).

#### Use and disclosure of personal information

**Your personal information is protected by law** under the *Privacy Act 1988* (Cth) (the Privacy Act). Personal information is information or an opinion about an identifiable individual. Personal information includes an individual's name and contact details.

Any use or disclosure of your personal information must occur in accordance with the Privacy Act, the *Australian Education Act 2013* and Australian Education Regulations 2023.

Your personal information provided to the department through the collection may be:

- disclosed to the ABS for the purposes of capacity to contribute calculations and analysis as a part of the Multi-Agency Data Integration Project (MADIP). Find more information about MADIP on the ABS website [MADIP page](#)
- disclosed to a contracted auditor where the department may audit a school's collection submission. The contracted auditor compares the school's submission with the student enrolment information. The contracted auditor will not use the information for any other purpose

- disclosed to our service providers for the purpose of providing the department with information and communications technology support
- used or disclosed where it is otherwise required or authorised by law.

The department does not intend to disclose your personal information to any overseas recipients.

Find the department's privacy policy on the [Department of Education](#) website which includes information on:

- how individuals can access and modify personal information held by the department
- how complaints about potential breaches or breaches of the Privacy Act can be made
- how the department will deal with these complaints.

The department commissioned an independent Privacy Impact Assessment (PIA). The PIA assesses the flows of information under the Collection, compliance with the Privacy Act and measures in place to safeguard the personal information being collected. The current version is available on the [2018 Student Residential Address Collection: Additional Required information Privacy Impact Assessment web page](#).

### What do you need to do?

You are not required to do anything. Your school is responsible for providing the department with the requested details; however, you can contact the school to update your family's details.

### Contacts for further information

Your school can provide additional information about the collection process.

Alternatively, please visit the [SchoolsHUB Address Collection help and support page](#).

2/2



# MOUNT CARMEL COLLEGE



Register for  
**OPEN DAY**  
today!

**OPEN DAY:**  
Secondary Campus

**Thursday 21 March**  
4pm - 7pm

Visit [www.mcc.catholic.edu.au](http://www.mcc.catholic.edu.au) or phone 8447 0500



## SPORTS & CARNIVALS FOR MCC SECONDARY STUDENTS IN 2024

Please check out some of the sport options available on the Secondary Campus at MCC and get ready to have fun!

Carnivals run each term and they are held within school hours under teacher supervision. Wednesday Sport starts Term 2, being held on a Wednesday afternoon from 3pm-4pm where we will transport the teams to and from the venue, under the guidance of teachers. Students will return to school between 4:15pm-4:30pm.

We look forward to an amazing year of sports and growth as we shape athletes of the future as well as supporting students who are wanting to try sport.

Bek Footner, PE & Sports Coordinator - Secondary Campus

<h3>INTERSTATE COMPS</h3> <p>WANT TO BE THE NEXT STATE CHAMPION AND MAYBE ONE DAY BE AN OLYMPIAN IN YOUR SPORT!?</p> <p>HEAD OVER TO THE SCHOOL SPORT SA WEBSITE &amp; NOMINATE FOR THE STATE TRIALS OR CHECK OUT THE SPORTS WEBSITE FOR SPECIFIC STATE TEAM TRIAL INFO</p>	<h3>WEEKLY SPORT</h3> <p><b>TERM 2</b></p> <table border="0"> <tr> <td>SENIOR</td> <td>JUNIOR</td> </tr> <tr> <td>BOYS SOCCER</td> <td>GIRLS BASKETBALL</td> </tr> <tr> <td>GIRLS NETBALL</td> <td>BOYS FOOTBALL</td> </tr> </table> <p><b>TERM 3</b></p> <table border="0"> <tr> <td>SENIOR</td> <td>JUNIOR</td> </tr> <tr> <td>MIXED VOLLEYBALL</td> <td>GIRLS NETBALL</td> </tr> <tr> <td></td> <td>BOYS BASKETBALL</td> </tr> <tr> <td></td> <td>BOYS 7-ASIDE SOCCER</td> </tr> </table> <p><b>TERM 4</b></p> <table border="0"> <tr> <td>SENIOR</td> <td>JUNIOR</td> </tr> <tr> <td></td> <td>MIXED VOLLEYBALL</td> </tr> <tr> <td></td> <td>BOYS BASKETBALL</td> </tr> <tr> <td></td> <td>GIRLS FOOTBALL</td> </tr> </table>	SENIOR	JUNIOR	BOYS SOCCER	GIRLS BASKETBALL	GIRLS NETBALL	BOYS FOOTBALL	SENIOR	JUNIOR	MIXED VOLLEYBALL	GIRLS NETBALL		BOYS BASKETBALL		BOYS 7-ASIDE SOCCER	SENIOR	JUNIOR		MIXED VOLLEYBALL		BOYS BASKETBALL		GIRLS FOOTBALL	<h3>SCHOOL SPORT CARNIVALS</h3> <p>ENTRY INTO SCHOOL SPORTS CARNIVALS FOR YOUR INDIVIDUAL SPORT IS POSSIBLE, HOWEVER, A PARENT OR GUARDIAN IS LEGALLY REQUIRED TO ATTEND FOR DUTY OF CARE</p>	<h3>CARNIVALS</h3> <table border="1"> <tr> <td> <p><b>TERM 1</b></p> <p>Wk 4: Mon - Sports Day Wk 4: Wed 7-8 - Basketball @ St Clair Wk 5: Fri 7-12 - Swimming Carnival Wk 7: Wed 10-12 Basketball Carnival @ St Clair Wk 8: Tues 7-12 Catholic Athletics Carnival</p> </td> </tr> <tr> <td> <p><b>TERM 2</b></p> <p>Wk 1: Thurs 9-10 - Volleyball Carnival @ The Arc Wk 5: Tues 7-12 Boys + Girls Netball @ Agarna Park Wk 10: Thurs 9-10 - 5-a-side Soccer @ Gepps Cross Wk 10: Fri - Port Intercultural Cup</p> </td> </tr> <tr> <td> <p><b>TERM 3</b></p> <p>Wk 1: Wed 11-12 - 7-a-side Soccer @ Gepps Cross Wk 2: Thurs 7-8 - 5-a-side Soccer @ Gepps Cross Wk 4: Thurs &amp; Fri - Josephite Exchange Wk 7: Tues - SACE Volleyball @ The Lights Wk 9: Fri - Volleyball @ The Lights</p> </td> </tr> <tr> <td> <p><b>TERM 4</b></p> <p>Wk 1: Fri 7-12 - Beach Volleyball @ Glenelg Wk 4: Fri 7-10 - Frisbee @ Park 17 Wk 6: Fri 7-8 - 3v3 Basketball @ St Clair Wk 7: Mon 7-8 - Beach Soccer @ Largs Beach</p> </td> </tr> </table>	<p><b>TERM 1</b></p> <p>Wk 4: Mon - Sports Day Wk 4: Wed 7-8 - Basketball @ St Clair Wk 5: Fri 7-12 - Swimming Carnival Wk 7: Wed 10-12 Basketball Carnival @ St Clair Wk 8: Tues 7-12 Catholic Athletics Carnival</p>	<p><b>TERM 2</b></p> <p>Wk 1: Thurs 9-10 - Volleyball Carnival @ The Arc Wk 5: Tues 7-12 Boys + Girls Netball @ Agarna Park Wk 10: Thurs 9-10 - 5-a-side Soccer @ Gepps Cross Wk 10: Fri - Port Intercultural Cup</p>	<p><b>TERM 3</b></p> <p>Wk 1: Wed 11-12 - 7-a-side Soccer @ Gepps Cross Wk 2: Thurs 7-8 - 5-a-side Soccer @ Gepps Cross Wk 4: Thurs &amp; Fri - Josephite Exchange Wk 7: Tues - SACE Volleyball @ The Lights Wk 9: Fri - Volleyball @ The Lights</p>	<p><b>TERM 4</b></p> <p>Wk 1: Fri 7-12 - Beach Volleyball @ Glenelg Wk 4: Fri 7-10 - Frisbee @ Park 17 Wk 6: Fri 7-8 - 3v3 Basketball @ St Clair Wk 7: Mon 7-8 - Beach Soccer @ Largs Beach</p>
SENIOR	JUNIOR																												
BOYS SOCCER	GIRLS BASKETBALL																												
GIRLS NETBALL	BOYS FOOTBALL																												
SENIOR	JUNIOR																												
MIXED VOLLEYBALL	GIRLS NETBALL																												
	BOYS BASKETBALL																												
	BOYS 7-ASIDE SOCCER																												
SENIOR	JUNIOR																												
	MIXED VOLLEYBALL																												
	BOYS BASKETBALL																												
	GIRLS FOOTBALL																												
<p><b>TERM 1</b></p> <p>Wk 4: Mon - Sports Day Wk 4: Wed 7-8 - Basketball @ St Clair Wk 5: Fri 7-12 - Swimming Carnival Wk 7: Wed 10-12 Basketball Carnival @ St Clair Wk 8: Tues 7-12 Catholic Athletics Carnival</p>																													
<p><b>TERM 2</b></p> <p>Wk 1: Thurs 9-10 - Volleyball Carnival @ The Arc Wk 5: Tues 7-12 Boys + Girls Netball @ Agarna Park Wk 10: Thurs 9-10 - 5-a-side Soccer @ Gepps Cross Wk 10: Fri - Port Intercultural Cup</p>																													
<p><b>TERM 3</b></p> <p>Wk 1: Wed 11-12 - 7-a-side Soccer @ Gepps Cross Wk 2: Thurs 7-8 - 5-a-side Soccer @ Gepps Cross Wk 4: Thurs &amp; Fri - Josephite Exchange Wk 7: Tues - SACE Volleyball @ The Lights Wk 9: Fri - Volleyball @ The Lights</p>																													
<p><b>TERM 4</b></p> <p>Wk 1: Fri 7-12 - Beach Volleyball @ Glenelg Wk 4: Fri 7-10 - Frisbee @ Park 17 Wk 6: Fri 7-8 - 3v3 Basketball @ St Clair Wk 7: Mon 7-8 - Beach Soccer @ Largs Beach</p>																													



## MOUNT CARMEL COLLEGE

R-12

# PLAYGROUP

All welcome

ENROL NOW!

Children's brains develop rapidly in the early years of life. Positive play experiences will help children develop early literacy and numeracy skills. At Playgroup you will have the opportunity to talk, sing, play, laugh, look and learn.

Please bring your own child's healthy snack for fruit time and a hat in warmer weather.

"The wider the range of possibilities we offer children, the more intense will be the motivations and the richer their experiences."  
*Leona Matigoni*





**PLAYGROUP**  
(all ages)  
Thursday 9am - 11am  
**FREE**

Early Years Centre  
Mount Carmel College Primary Campus  
17 Pennington Terrace, Pennington

DURING SCHOOL TERMS ONLY

FOR FURTHER DETAILS CONTACT:  
Phone: 8447 0500  
Email: [info@mcc.catholic.edu.au](mailto:info@mcc.catholic.edu.au)  
Website: [mcc.catholic.edu.au](http://mcc.catholic.edu.au)



# GET INTO RUGBY

✉ [portrugbyjuniors@gmail.com](mailto:portrugbyjuniors@gmail.com)

📘 <https://www.facebook.com/portadelairugby>

📷 <https://www.instagram.com/portadelairugbyclub/>



🏠 Riverside Oval, 18 Baynes Place Adelaide, SA, Australia 5015

📞 0404 469 020